

Appendix B: HARWICH AREA COURSE MARKS 2014

1. Starting and finishing lines will be as indicated in Sailing Instructions.

Courses on the day may include orange inflatable drop marks in addition to the seasonal racing marks and any of navigational buoys & marks indicated below.

2. SEASONAL MARKS

These seasonal racing marks maintained by the Harwich Harbour Authority are in the following approximate positions. They may vary from year to year. Attention to a current chart or to the HHA Notices to Mariners is advised.

AA Armada Racing Mark 51°52.83'N, 01°22.19'E PH Pennyhole Racing Mark 51°53.55'N, 01°18.00'E
 CL Cork Ledge Racing Mark 51°54.50'N, 01°23.40'E FX Fox's Racing Mark 51°54.00'N, 01°21.00'E

3. NAVIGATION MARKS & SEASONAL RACING MARKS

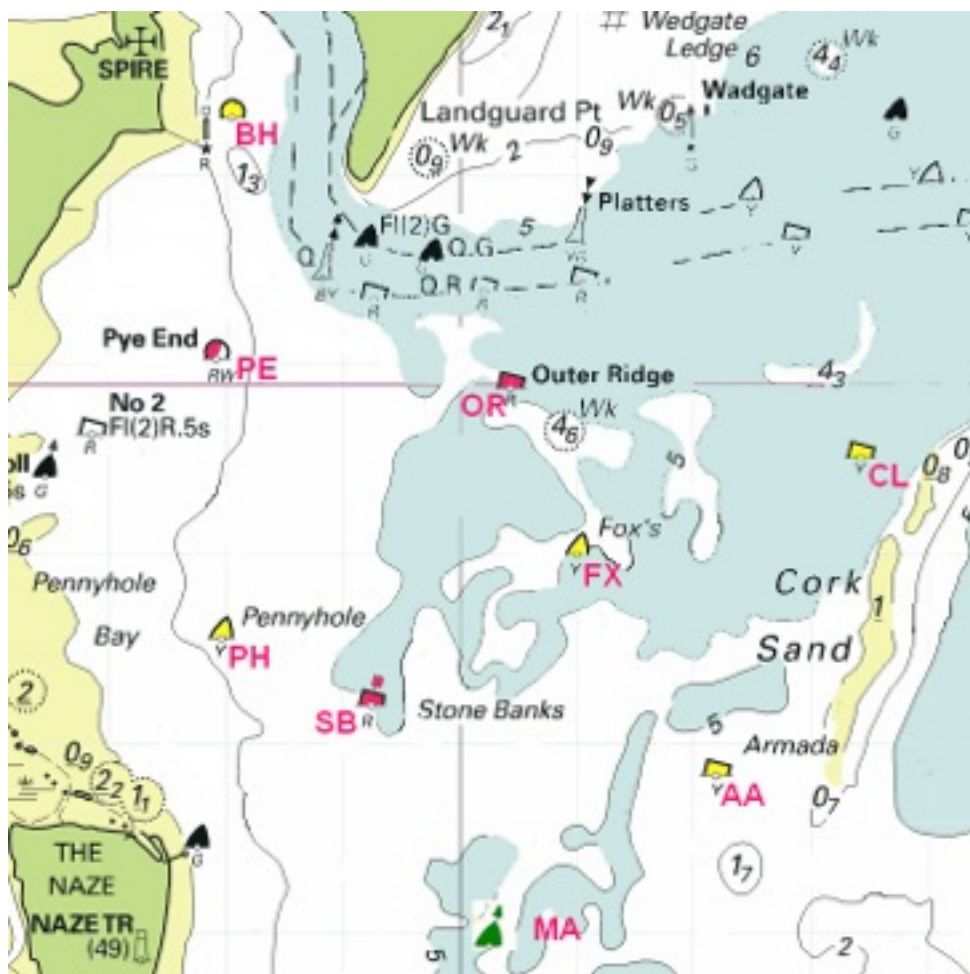
(This list covers all marks with recognised abbreviation in the racing area used in the Haven Points Series)

Abbreviated Mark Name

AA Armada Racing Mark
 BH Beacon Hill Buoy
 CB Cork Sand Yacht Beacon
 CL Cork Ledge Racing Mark
 FX Fox's Racing Mark
 HS Harwich Shelf Buoy
 LD Landguard Buoy
 MA Medusa Buoy
 NG North East Gunfleet Buoy

Abbreviated Mark Name

OR Outer Ridge Buoy
 PE Pye End Buoy
 PH Pennyhole Racing Mark
 RT Roughs Tower and it's Buoys
 SB Stone Banks Buoy
 SC South Cork Buoy
 SL Sunk Light Vessel
 W2 Wallet No.2 Buoy
 W4 Wallet No.4 Buoy



SHOALS may be encountered in the racing area, and it should not be assumed that the rhumb line between marks has adequate depth for all boats at all states of the tide.